

# The Experience of scabies in our Pasifika Community

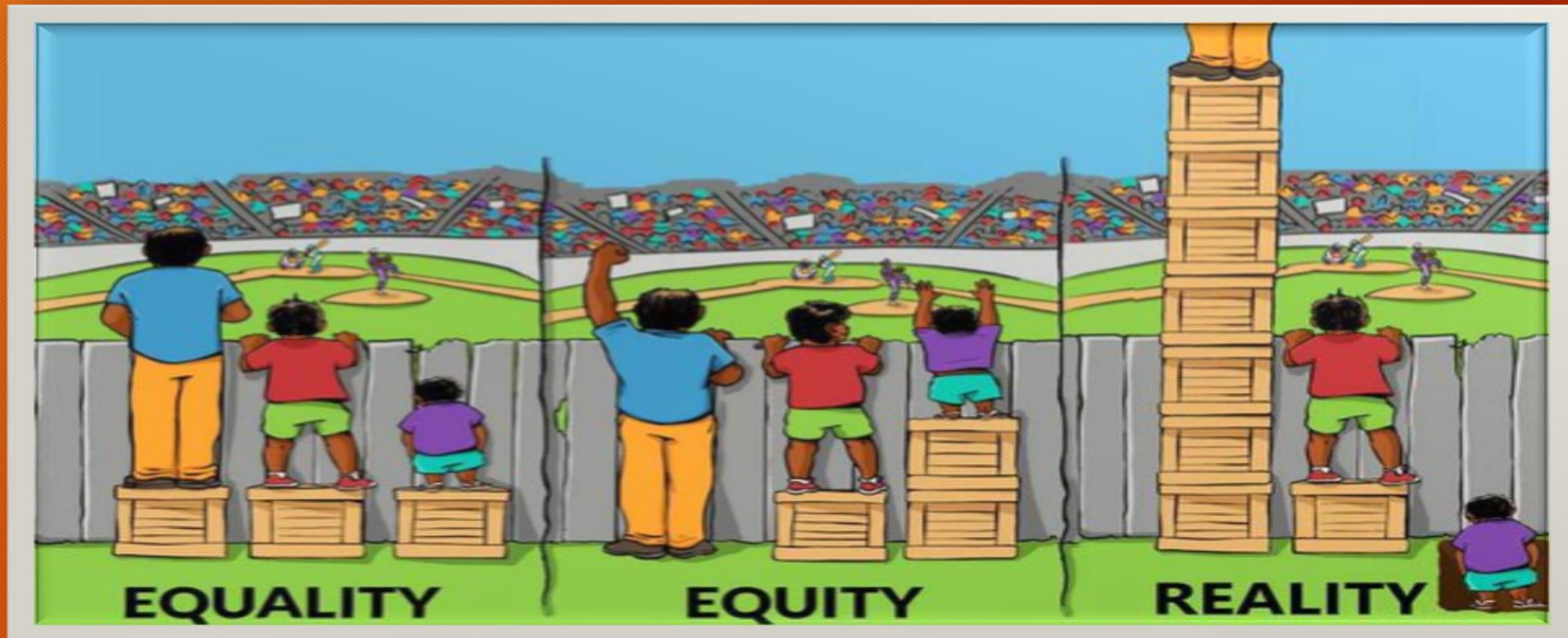
Dr Maryann Heather  
General Practitioner Southseas Healthcare  
13<sup>th</sup> September 2019

# OUTLINE

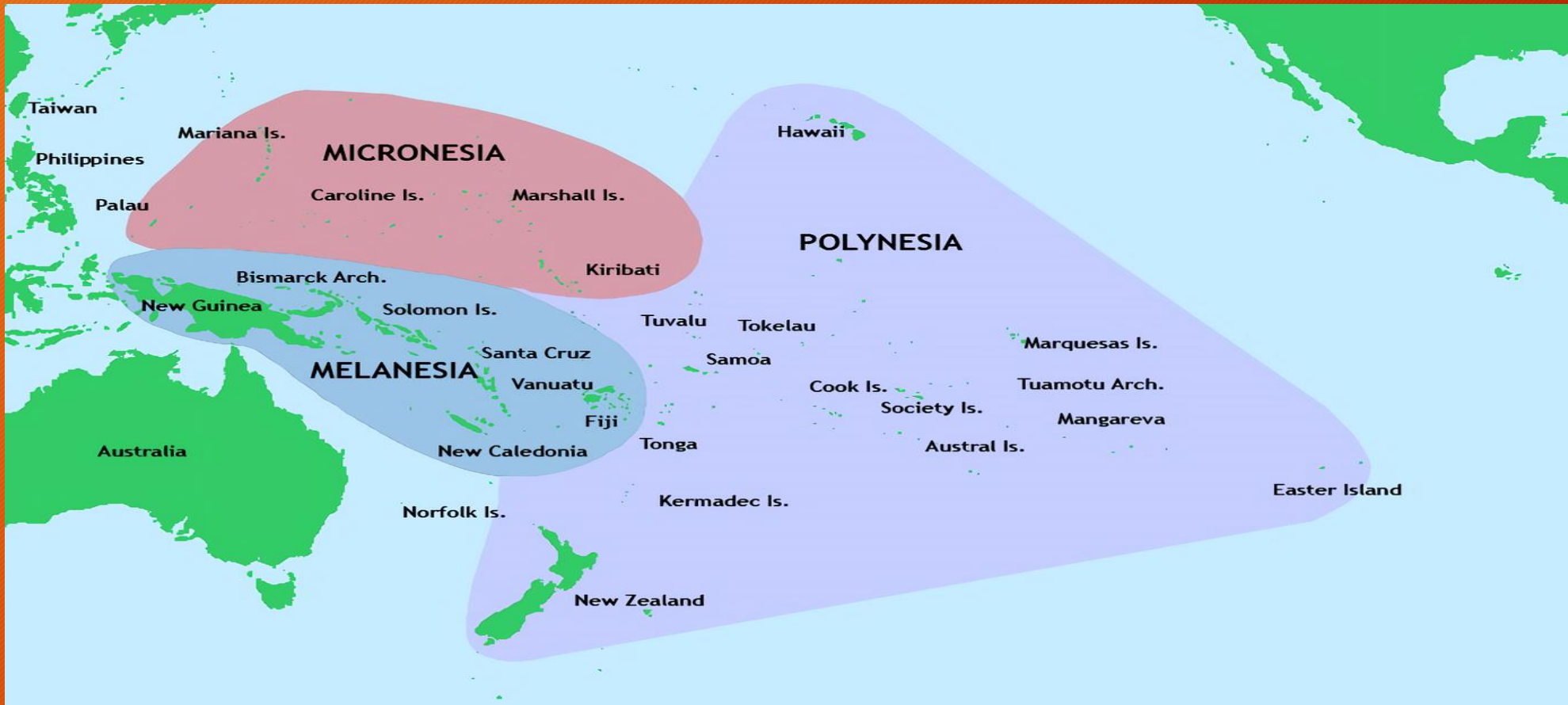
- Southseas Healthcare Clinic
- Southseas Clinic Data (2016-2019)  
Mana Kidz Data (2018-2019)
- Scabies and other issues



# Achieving Health Equity in NZ : Improving Scabies Treatment



# THE PACIFIC REGION





# Scabies in the Pacific Region

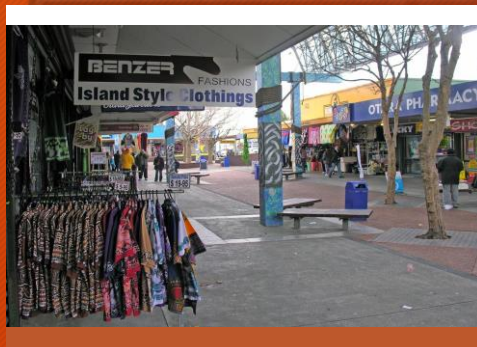
- One of the highest prevalence areas in the world
- NZ late 1970s high prevalence in Maori ( -10%) Pacific ( -18%) people
- Mana Kidz Programme impetigo 67%,with 19% skin infections having scabies
- Strong Link between impetigo, scabies and Rheumatic Fever
- Estimated Pacific Population in NZ to reach approx 480 000 by 2026





# Southseas Healthcare Otara AUCKLAND

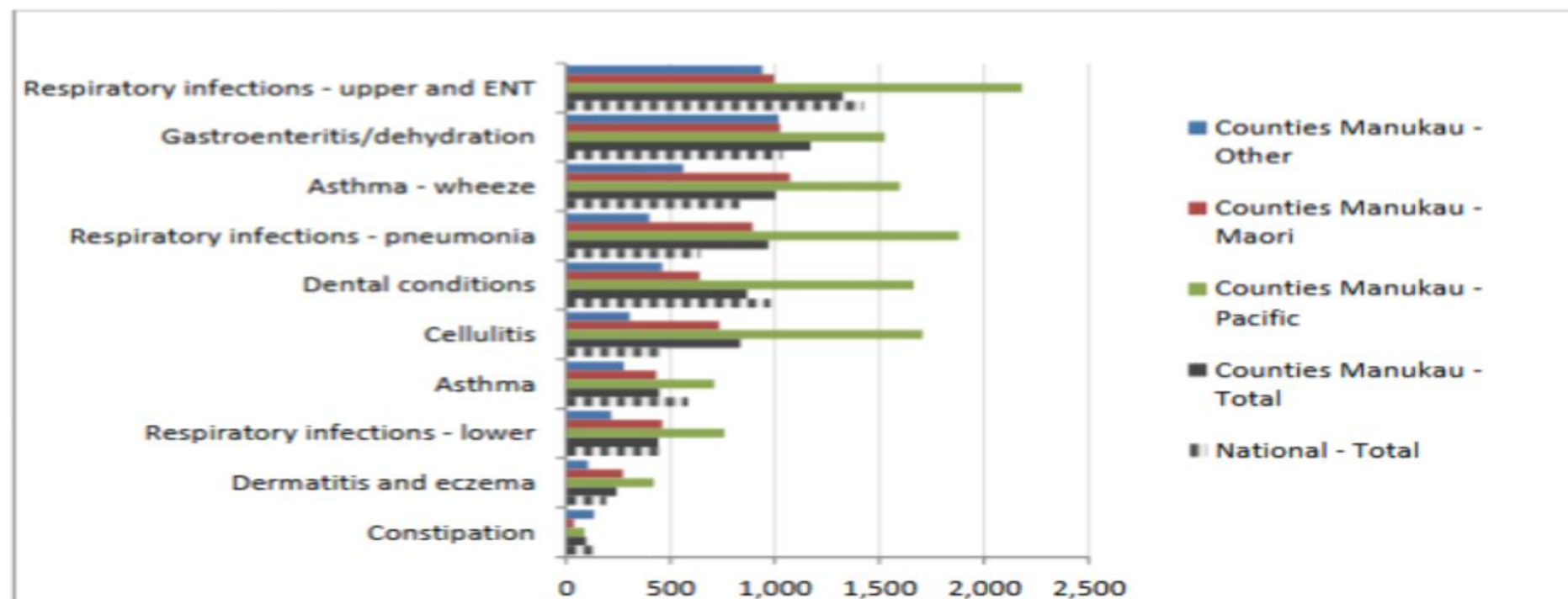
- VLCA CLINIC
- Non Profit Organisation
- Pacific Provider ( 1999)
- 5300 PATIENTS enrolled
- Clinic + Community Services
- **94% PACIFIC** **3% MAORI**
- Local Schools
- Churches
- Low SE/overcrowding
- Families - Large
- Frequent travelling population



# Top 10 ASH Rates CMDHB 2015

## Age 0-4 years old

Figure 7: Top 10 Conditions, ASH Rates, Counties Manukau DHB Age 0 – 4 (12 months to end Sep 2015) <sup>24</sup>





# CMDHB 2014-2018 ASH Rates 0-4 years old Pacific Children Admission of Skin infections

ASH rates per 100,000 population for children aged 0-4 living in Counties Manukau - skin infection subset





# Scabies data - 2016-2019 Southseas

- Audit data - Query Builder Med Tech32
- Age range 0-85 years old Pacific Patients
- Total Patients Dx + Rx for Scabies = 454
- Approx 200 scabies in infants/children below 10 years old
- Male 191 Female 198
- Samoan (432) Tongan( 5) Tokelaun(2) Cook Island(5) Tuvaluan (4)  
Kiribati( 5) Niuean (3) Maori (1)
- 2019 - 62 scabies to date



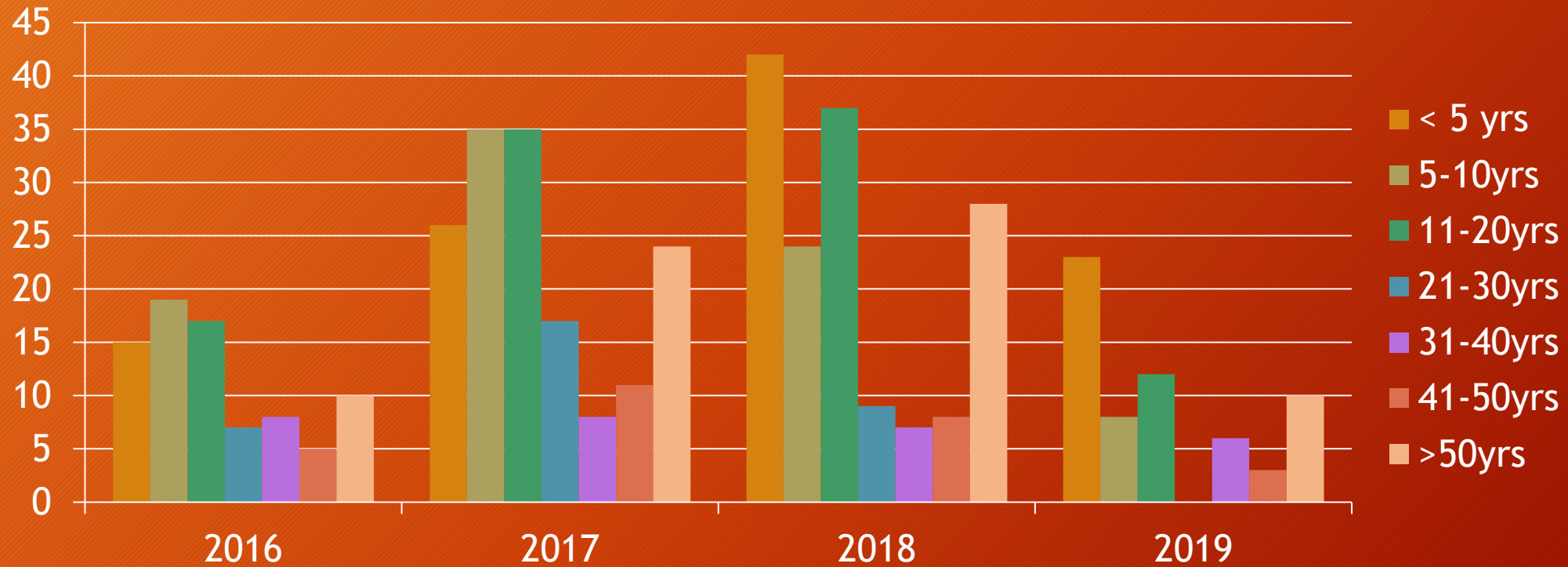
# Southseas : Scabies 2016 -2019

Ages	2016	2017	2018	2019	Total	Recurr.	2 <sup>nd</sup>	3 <sup>rd</sup>	4 <sup>th</sup>
< 5	15	26	42	23	106		6	2	
6-10	19	35	24	8	86		2		
11-20	17	35	37	12	101		6		
21-30	7	17	9	-	33		2	3	
31-40	8	8	7	6	29		1		
41-50	5	11	8	3	27		6		
> 50	10	24	28	10	72		3		1
	81	156	148	62	454		26	5	1



# Southseas Data 2016-2019 Ages 0-85

## Pacific People Scabies n=454



# Diagnosis is DIFFICULT

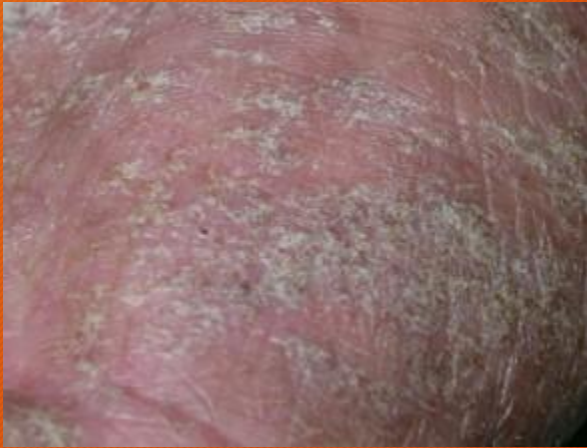
classical presentation vs atypical presentation

crusted scabies/hypersensitive rash but no burrows

- impetigo /eczema /injuries
- Recurrent presentation for skin condition ( MRSA)
- Treating Households /often parents request medications for children
- under estimating scabies prevalence in the community
- Investigation for scabies /technology + health /access to dermatoscopy



# Scabies presentations : Not always sure!



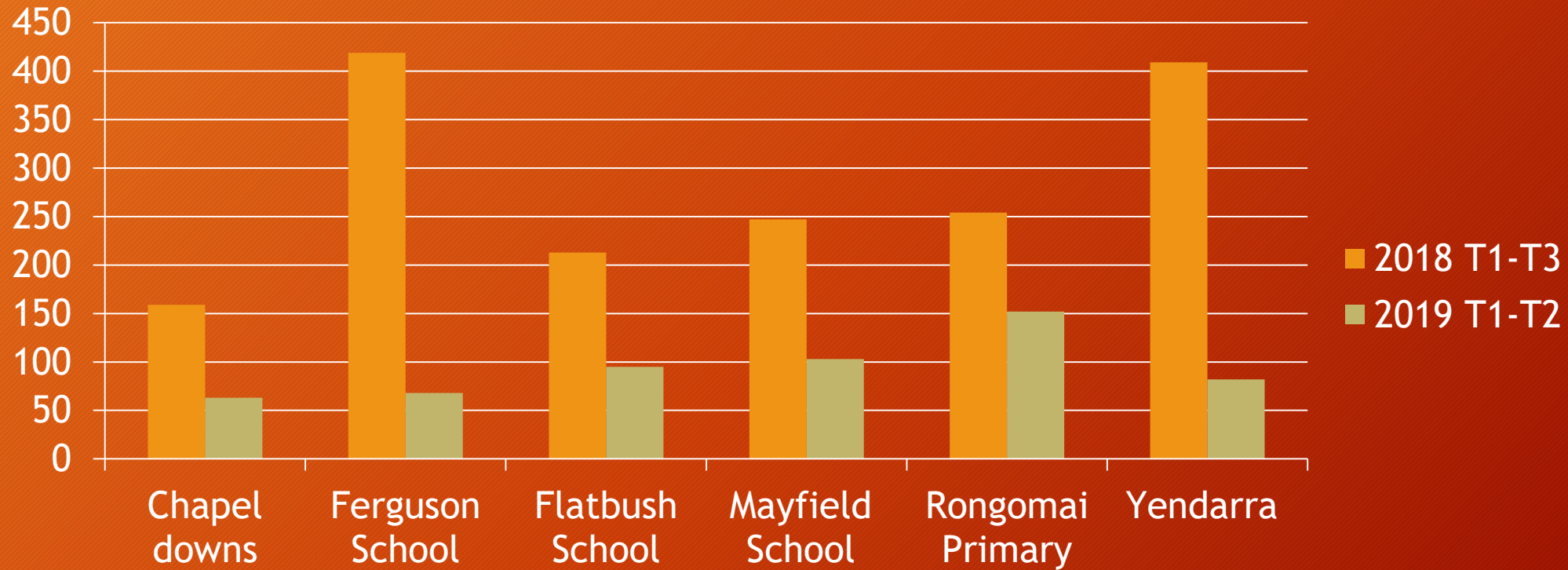
# Challenges in primary care

- Treatment of scabies- best treatment
- Chronic itching → impetigo /dermatitis /rash
- Large households - contaminated bed linen & towels & clothes, bag non washable items in sealed plastic bag for one week, clean furniture/carpets.
- Low SE status - hygiene, access to washing machines, hot water
- Education/health promotion
- Language specific/visual information
- Recurrent treatment /re-infection (incomplete household treatment?)
- Asymptomatic family - no treatment/in denial





# Mana Kidz Data 2018/2019 ) RF Programme Skin Conditions( Impetigo/Eczema/Scabies)



# Mana Kidz RF Prevention Programme 2018/19

## GAS positive swabs /total throat swabs

Chapel Downs  
School

2018 200/1455

2019 150/1052

Ferguson School

2018 136/714

2019 40/215

Flatbush School

2018 180/1273

2019 134/611

Mayfield School

2018 202/891

2019 88/151

Rongomai School

2018 125/844

2019 87/644

Yendarra School

2018 78/811

2019 83/454



# Scabies Treatment - What Really Works ?



PERMETHRIN 5%

IVERMECTIN

Crotmiton  
(Eurax)  
cream

Malathion  
Lotion 0.5%





# Scabies and Other issues

- Association between scabies ,skin infections and Rheumatic Fever risk in Pacific population
- Medical Conditions + Scabies - unusual to come in alone for scabies in Pacific Population - secondary bacterial infection, dermatitis
- ASH rates in South Auckland (CMDHB) and in primary care - difficult to manage skin infections and scabies -recurrent infections
- Hygiene/Sharing towels/beds/overcrowding/education around good skin care /Access to hotwater /Washing machines/large families to treat
- Dr Teuila Percival Paediatrician Kidz First - Often an incidental finding as present with other medical conditions,there has been no improvement in scabies treatment/management over the years.





# Key Points

## Scabies in Pacific Population

- Presentations variable - Diagnosis can be difficult
- High prevalence in this population
- Overcrowding, poverty, lack of awareness, language, herbal /alternative remedies
- Impetigo/Eczema/Skin infections common with scabies
- High index of suspicion - especially if recurrent presentation for skin problem
- Often Mixed treatments ( antibiotics/eczema/scabies)
- Household treatment/awareness
- Education - Language Specific /Visual Aids /Media

# NIUEAN PROVERB

Fakamalolo ke he tau  
amaamanakiaga, ke mafola ai e tau  
matakainaga

Strengthen all endeavours and the  
community will benefit